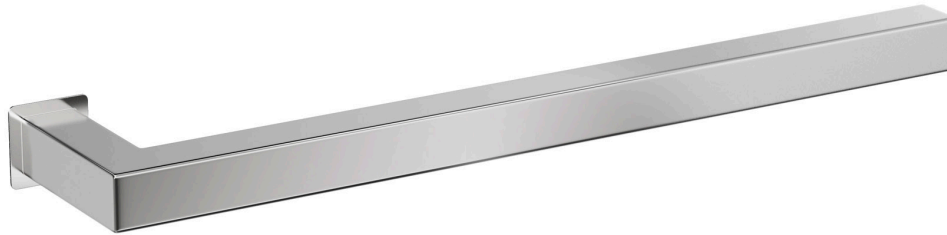


## Towel Bars - Square single mounted



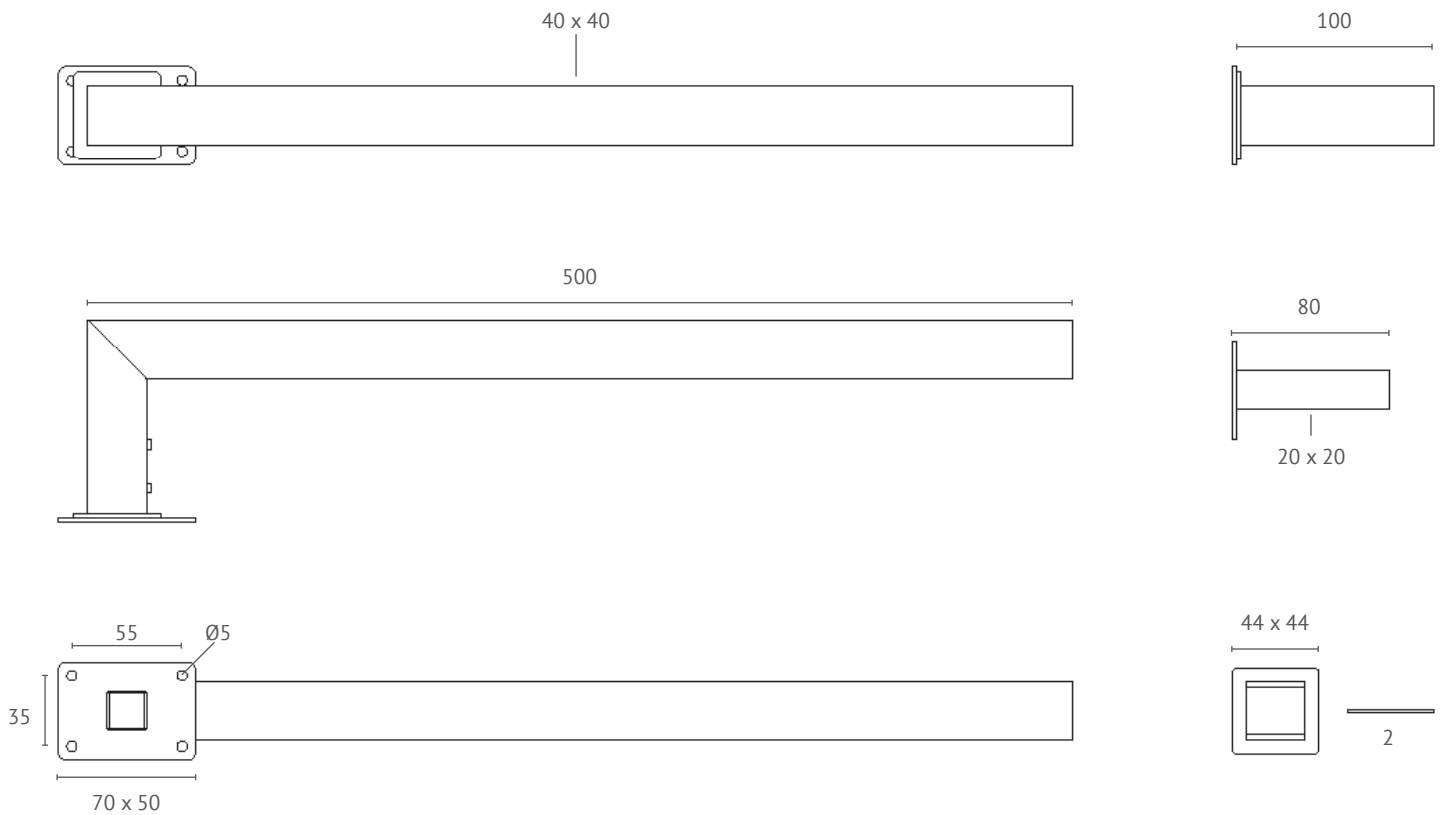
The patented electric towel bar collection has been beautifully designed to complement any bathroom. At only 12V, they can be installed anywhere in a bathroom.

- High quality 304 grade stainless steel.
- Patented dual self regulating heating element that is 50% more efficient.
- Safe for installation in bathrooms.
- Install with the included fixing studs or with our patented mounting system.
- Install multiple bars for design impact and effective towel drying.
- Designed and made in the UK.
- Hard wired to mains electricity via a suitably rated 12V transformer.

### Technical data

Code	HTB-SSS-500-DPS
Voltage	12V SELV
Material	304 Stainless Steel
Finish	Diamond Polished
Size	W 500 x H 32 x D 100mm
Maximum output	25W
Cable length	2m
Wiring connection	Concealed
Warranty	5 years

## Product dimensions



## Sizes and finishes

Code	Description	Size (mm)	Finish	Ouput (W)
HTB-SSS-500-DPS	Single Square 500MM	500 x 32 100	Diamon Polished	25
HTB-SSS-500-BSS	Single Square 500MM	500 x 32 100	Brushed Stainless	25
HTB-SSS-500-PLB	Single Square 500MM	500 x 32 100	Diamond Polished Brass	25
HTB-SSS-500-BRB	Single Square 500MM	500 x 32 100	Brushed Brass	25
HTB-SSS-500-MBK	Single Square 500MM	500 x 32 100	Matt Black	25
HTB-SSS-500-MWT	Single Square 500MM	500 x 32 100	Matt White	25

## Available finishes



Diamond Polished Stainless Steel



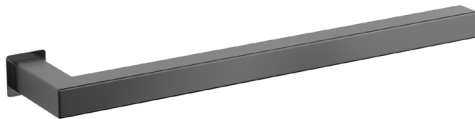
Diamond Polished Brass



Brushed Stainless Steel



Brushed Brass



Matt Black



Matt White

## Care and maintenance

Clean with a soft cloth moistened with warm, mild soapy water. Dry with a soft cloth. Do not use strong cleaners or abrasives as they can damage the finish.